



Indiana Center on Teacher Quality

Indiana University



Project Director: Sandi Cole, Ed.D. cmcole@indiana.edu

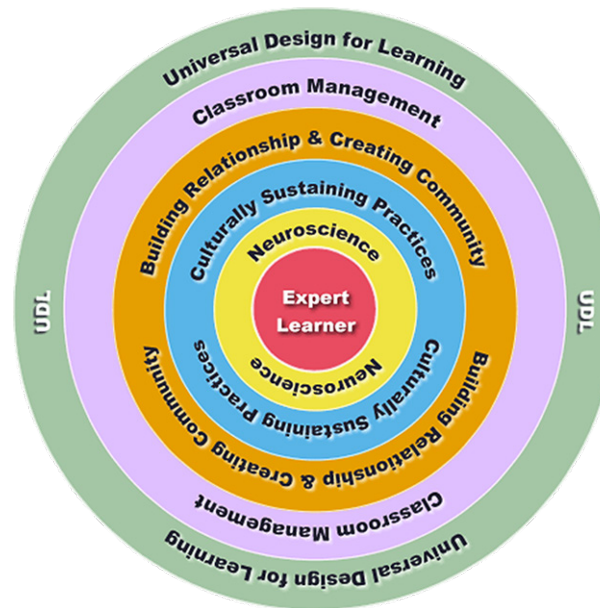
Project Values

We believe:

- All students, regardless of school or classroom they attend, should have access to high quality instruction.
- Students with disabilities have the right to an education with their age and grade level peers.
- Effective teacher supervision and evaluation emphasizes collegial relationships and quality feedback for growth and development.
- Fidelity of implementation is essential to monitoring, supporting and sustaining change in practice.
- School programs must be structured in ways that result in equitable educational outcomes.
- Teacher efficacy is important to the growth and achievement of students.
- Job embedded growth and support is the avenue to improved teacher effectiveness.

ICTQ Purpose

In partnership with schools, families, agencies and communities, the Indiana Center on Teacher Quality seeks to improve educational outcomes for students with and without disabilities by ensuring their access to a Pre K-12 continuum of instruction from high quality teachers.



Training & Coaching on the UDL Framework

Intensive Work in Five Districts

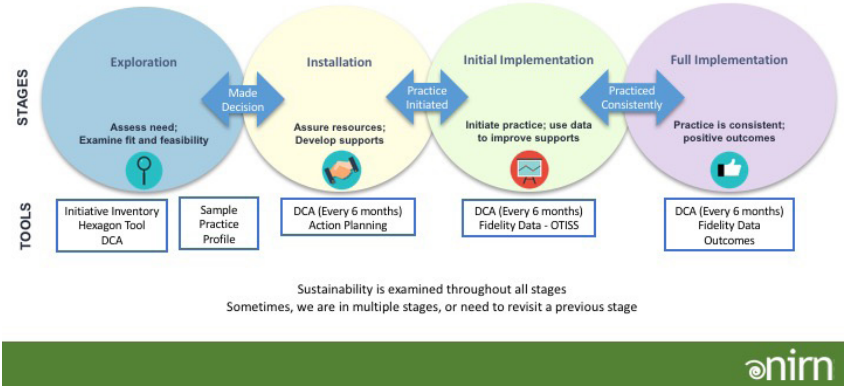


ICTQ is funded by the U.S. Department of Education, Office of Special Education Programs Grant No. H323A150004. The views expressed herein do not necessarily represent the positions or policies of the U.S. Department of Education. No official endorsement by the U.S. Department of Education of any product, commodity, service or enterprise mentioned in this publication is intended or inferred. Please cite as: ICTQ (2017). Indiana Center on Teacher Quality [Website]. Retrieved from <https://ictq.indiana.edu>

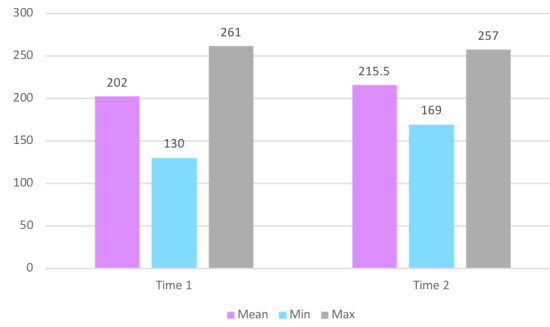
Implementation Science

Our work is guided by Implementation Science and supported by the NIRN Center

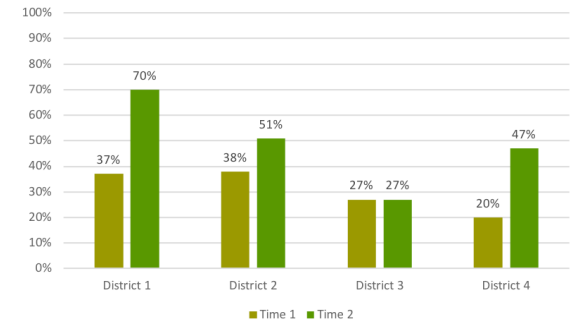
Active Implementation Stages



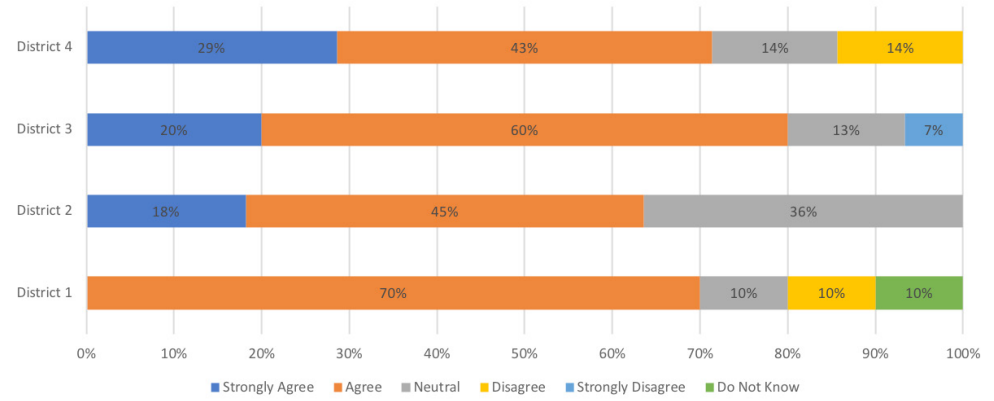
Self-Efficacy Fall 2017 to Spring 2018



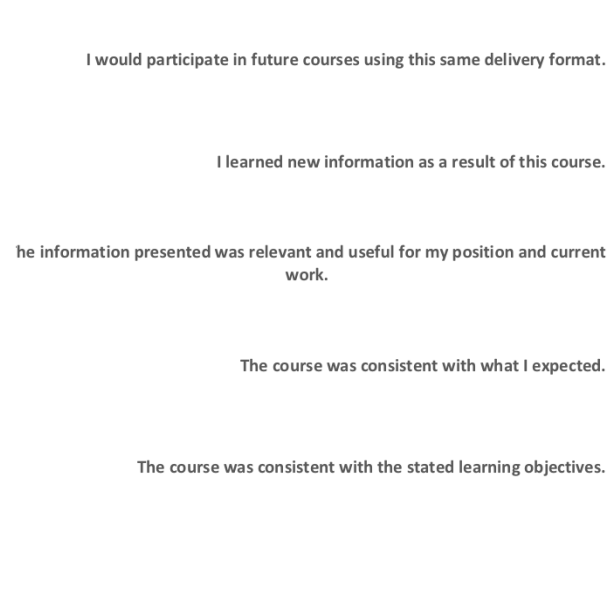
District Capacity Assessment



ICTQ Coach/Trainer Evaluation



Level 1: Online Training



Level 2: Face-to-face Training

